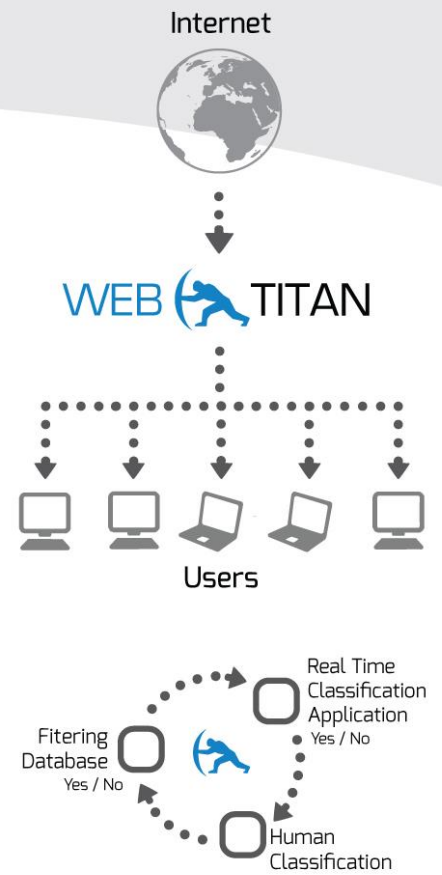




## Quickstart guide to using WPAD



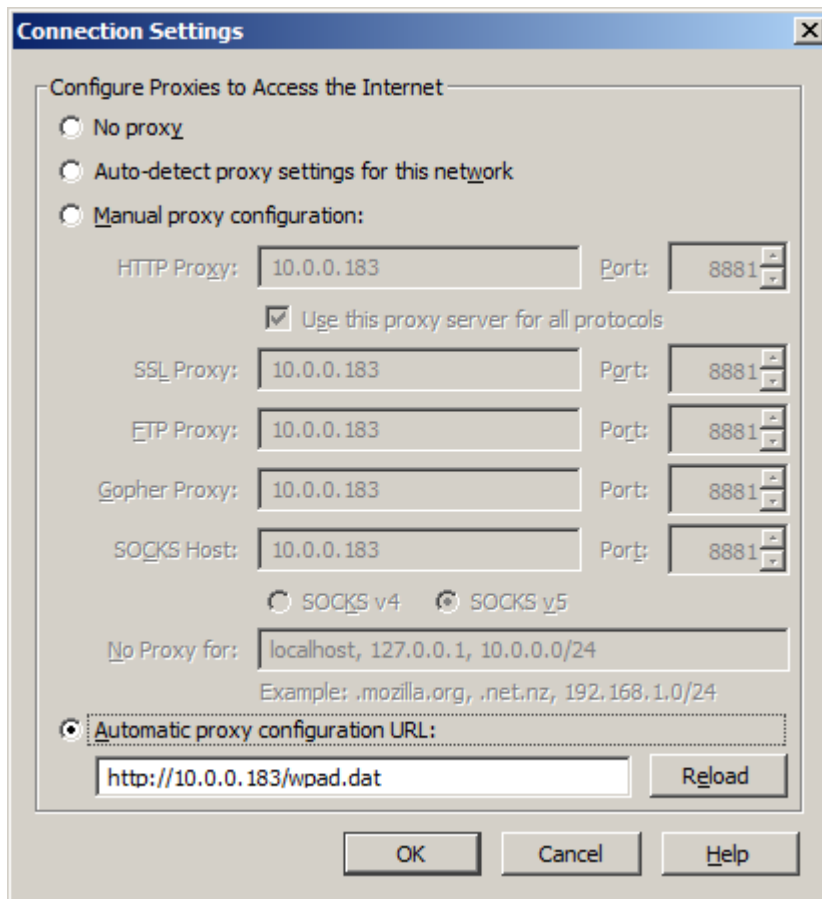


# 1. Introduction

Internet browsers can be guided to use WebTitan by configuring the web browser settings. This can be done by

- Manually setting the proxy configuration
- Automatically detect the proxy settings for the network.
- Providing a URL to a wpad.dat file which contains the network proxy settings.

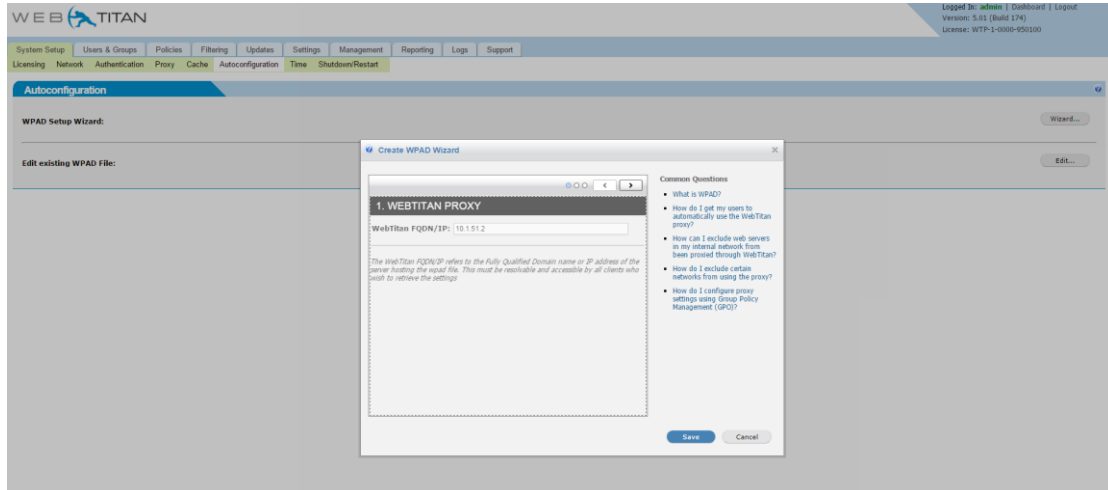
Below are example settings for the Firefox browser where the IP address of the WebTitan is 10.0.0.183 .





## 2. WPAD Wizard

The Wizard will take you through a 3 step process to create a wpad.dat file. See System Setup->Autoconfiguration->WPAD Setup Wizard. It also provides links to useful information about WPAD.





## 3. Example wpad.dat file

---

This file was generated by the WPAD Wizard.

```
//  
// Sample wpad file. Edit to suit your needs.  
//  
function FindProxyForURL(url, host) {  
  
    // If URL has no dots in host name, send traffic direct.  
    if (isPlainHostName(host)) {  
        return "DIRECT";  
    }  
  
    // If specific URL needs to bypass proxy, send traffic direct.  
    if (shExpMatch(url, "www.home.com"))  
        return "DIRECT";  
  
    // If specific URL needs to bypass proxy, send traffic direct.  
    var resolved_ip = dnsResolve(host);  
    if (isInNet(resolved_ip, "192.168.10.0", "255.255.255.0"))  
        return "DIRECT";  
  
    // All other traffic uses WebTitan proxy.  
    return "PROXY 10.1.51.2:8881; DIRECT";  
}
```