

# QuickStart guide for Transparent Proxy and WCCP

WebTitan Version 5



## Copyright © 2014 Copperfasten Technologies.

All rights reserved. The product described in this document is furnished under a license agreement and may be used only in accordance with the terms of the agreement.

Copperfasten Technologies gives no condition, warranty, expressed or implied about the fitness or quality of this manual or the accompanying product. Copperfasten reserves the right to make changes to this manual or the accompanying product, without notice to any person or company. Copperfasten shall not be liable for any indirect, incidental, special, or consequential damages, loss of profits, loss of goodwill, loss of reputation or economic loss resulting from the use of this manual or the accompanying product whether caused through Copperfasten negligence or otherwise and based on contract, tort, strict liability or otherwise, even if Copperfasten or any of its suppliers has been advised of the possibility of damages.

WebTitan is a trademark of Copperfasten Technologies Limited.

## Support

WebTitan technical support specialists can provide assistance when planning and implementing your WebTitan deployment to ensure a smooth deployment. Through online documentation, telephone help, and direct email support, WebTitan ensures that your questions will be answered in the fastest time possible. Access support information at <http://helpdesk.webtitan.com/support/home>

## Revision History

| Version | Date          | Changes          |
|---------|---------------|------------------|
| 1.0     | December 2014 | Initial Revision |



## Contents

|                         |   |
|-------------------------|---|
| Transparent Proxy ..... | 4 |
| WCCP .....              | 6 |



## Transparent Proxy

WebTitan can be set up to operate as a transparent proxy by going to the System Setup > Proxy tab and enabling the 'Enable Transparent Proxy' setting as shown in Figure 1.

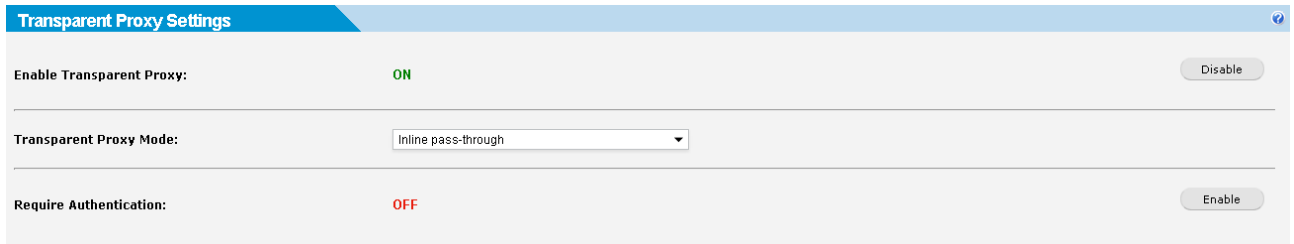


Figure 1: Transparent Proxy settings

Externally to WebTitan, network traffic must be directed to the appliance by either using a network device or configuring the client browser to use WebTitan as a default gateway as follows.

- Open up Network Connections

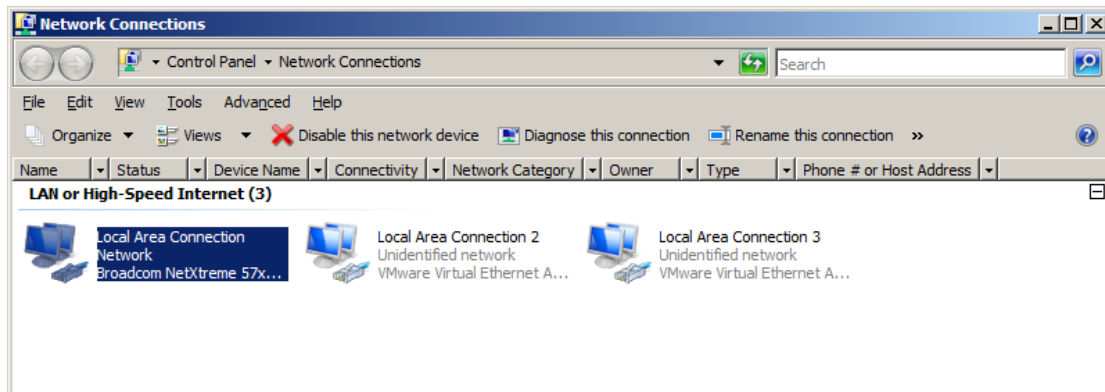


Figure 2: Network connections

- Right click the Network and select properties.

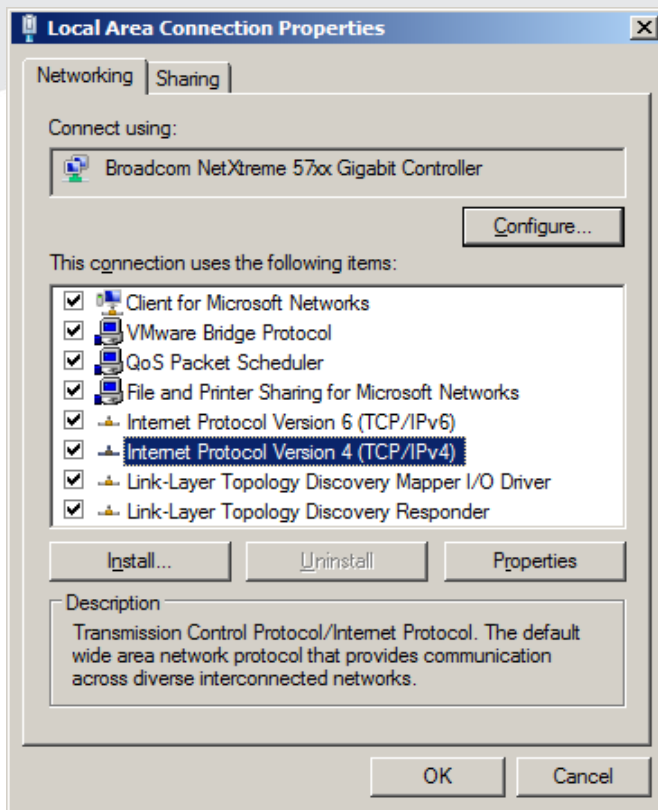


Figure 3: Connection Properties

- Then select the correct protocol - Internet Protocol Version 4 (Figure 4).
- Then click the properties button and enter in the 'Default gateway' field the IP address of the WebTitan appliance. In the example below, the default gateway has been set to 10.0.0.196.

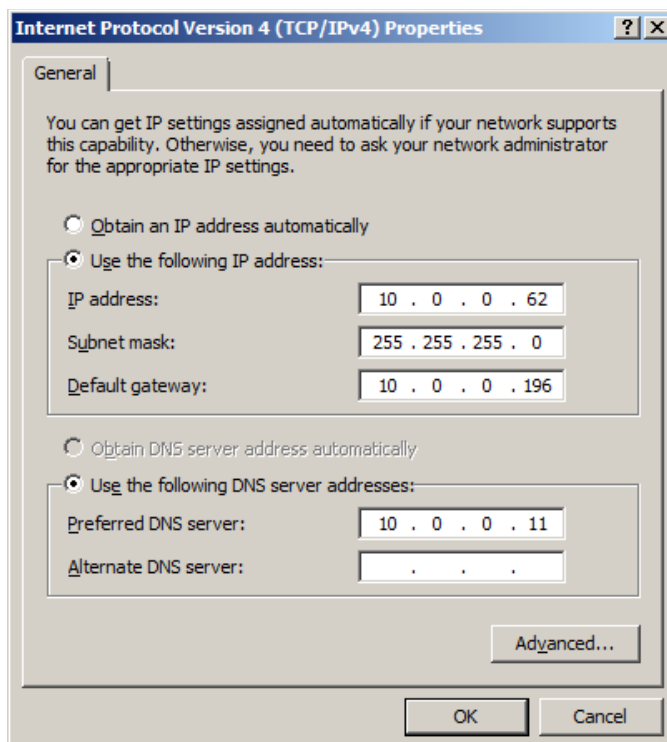


Figure 4: IPv4 Properties



## WCCP

Figure 5: WCCP settings

To configure WebTitan to act in conjunction with a Cisco device using WCCP version 2 you enable WCCP by going to the System Setup > Proxy tab and 'Enable Transparent Proxy'. After selecting WCCP, you must enter the following fields:

| Field                           | Value  |
|---------------------------------|--|
| <b>IP Address of the Router</b> | Normally the Internal IP address of the CISCO device |
| <b>Tunnel IP address</b>        | This is the Router Identifier see below              |

The Router Identifier is found by using a command like “**show ip wccp**” on your CISCO device; consult your Cisco device manual for the exact command for your device.

```
Router# show ip wccp
Global WCCP information:
  Router information:
    Router Identifier:      192.168.15.1
    Protocol Version:      2.0

  Service Identifier: web-cache
    Number of Cache Engines: 1
    Number of routers:      1
    Total Packets Redirected: 0
    Redirect access-list:   -none-
    Total Packets Denied Redirect: 0
    Total Packets Unassigned: 0
    Group access-list:     -none-
    Total Messages Denied to Group: 0
    Total Authentication failures: 0
```