



# Install for VMware® Guide

## Preparation

- ✓ Choose a suitable server that can support running a virtual machine with the following specification:
  - 2 GB memory, 60 GB disk and a Bridged network device.
  - Click <http://webtitan.com/products/webtitan-iso/technical-specification> for the complete specifications required or paste the URL into your browser
- ✓ You can use any VMware product for Windows or Linux including VMware ESX and ESXi (free), VMware Player (free), VMware workstation or the VMware server (free).
- ✓ Get a trial license from WebTitan from <http://webtitan.com/download>.

## Installation

**Note: You are strongly advised not to install VMware Server on a domain controller.**

- If you are using VMware Player, VMware Workstation, VMware Server V1.\* or VMware Server V2.\*.

1. Download WebTitan for VMware from <http://webtitan.com/download>.
2. Unzip the file into a location on your server.
3. Open the .vmx file using your VMware application.

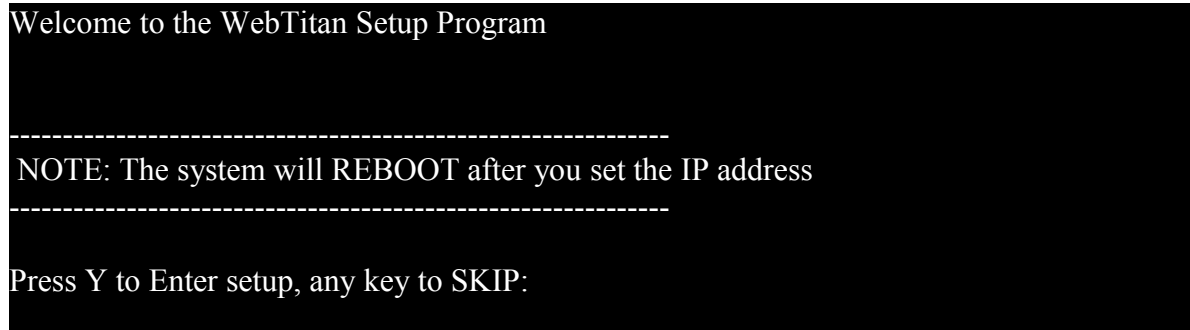
- If you are using VMWare ESX or VMWare ESXi.

1. Download WebTitan for VMware ESX from <http://webtitan.com/download>.
2. Unzip the file into a location on your server.
3. On VMware ESX - Import the .ovf file using your application.

On VMware ESXi - Deploy the .ovf file using your application.

- VM Client will allow you to import an .ovf, but you must have VM Server installed.

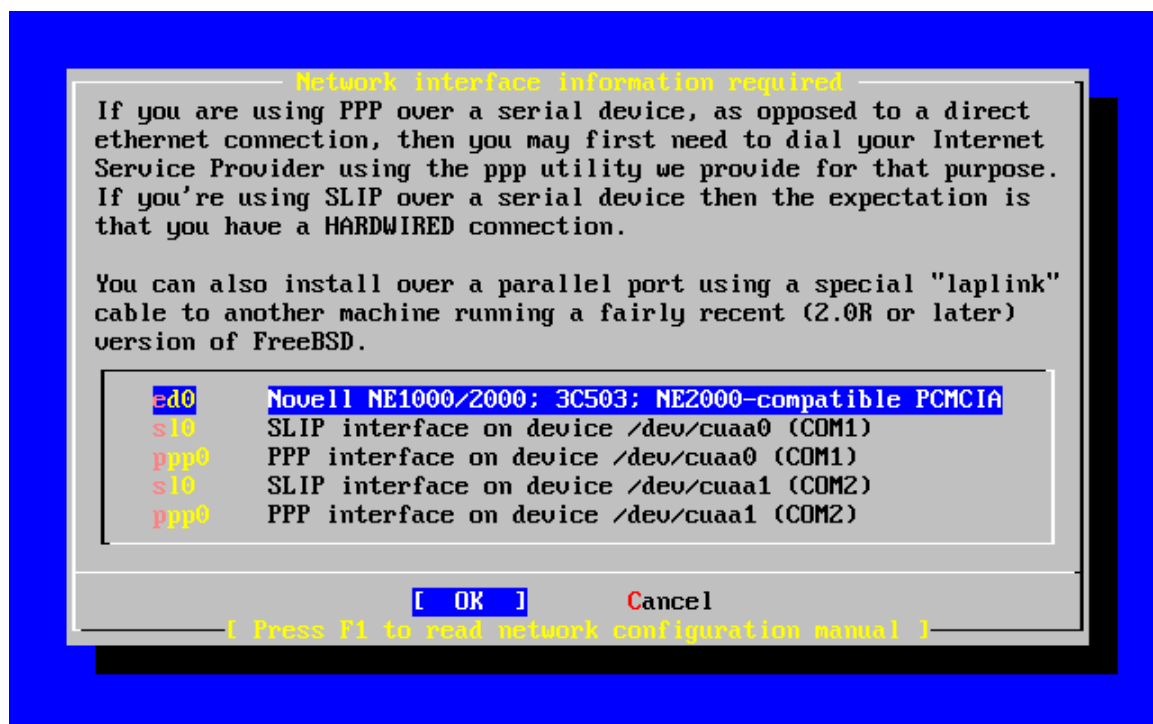
Run the virtual machine and the WebTitan application will begin to boot. When it has completed you will see the following screen on your VMware console:



Enter the setup program by typing “Y” followed by the ENTER key. (Y must be in uppercase.)

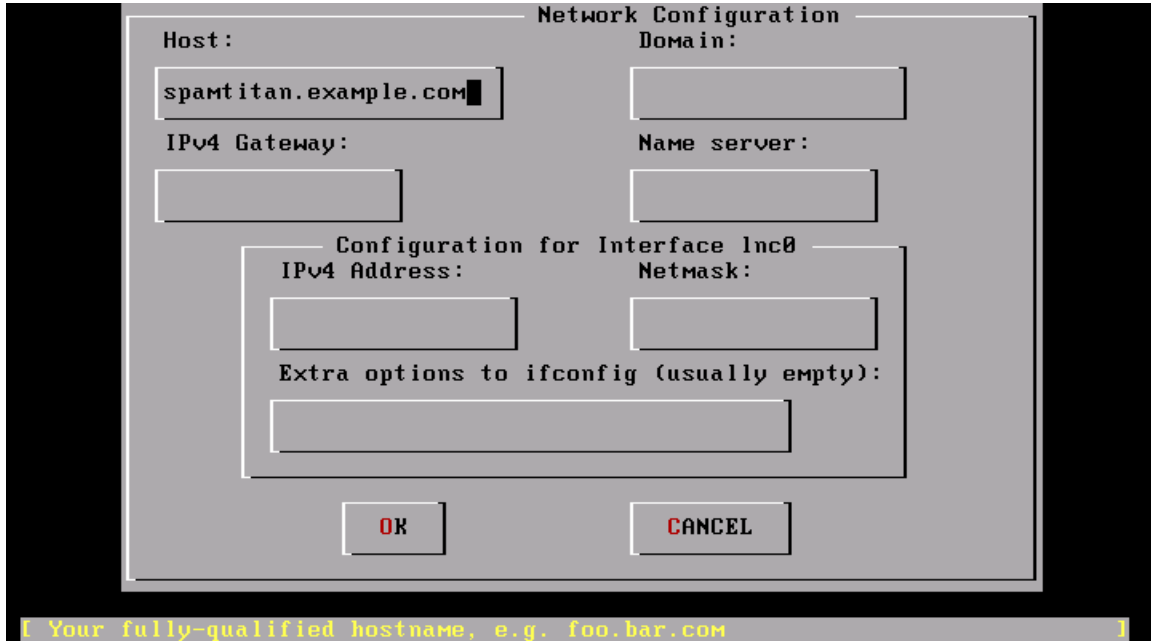
**NOTE:** *When you have completed assigning your IP address, the VM machine will reboot automatically.*

The following screen will appear and prompt you to select the Ethernet device of your server. Depending on your hardware, this can be xl0, ed0, fxp0, or em0. Normally you select the first item on the list below, unless you have multiple Ethernet devices. You can select a different device using the arrow keys. Hit ENTER when you have highlighted the appropriate device.



Now you will need to configure your interface.  
Select the 'NO' option for IPv6 and DHCP.

The following screen will then appear.



Network Configuration

Host: spamtitan.example.com

Domain:

IPv4 Gateway:

Name server:

Configuration for Interface Inc0

IPv4 Address:

Netmask:

Extra options to ifconfig (usually empty):

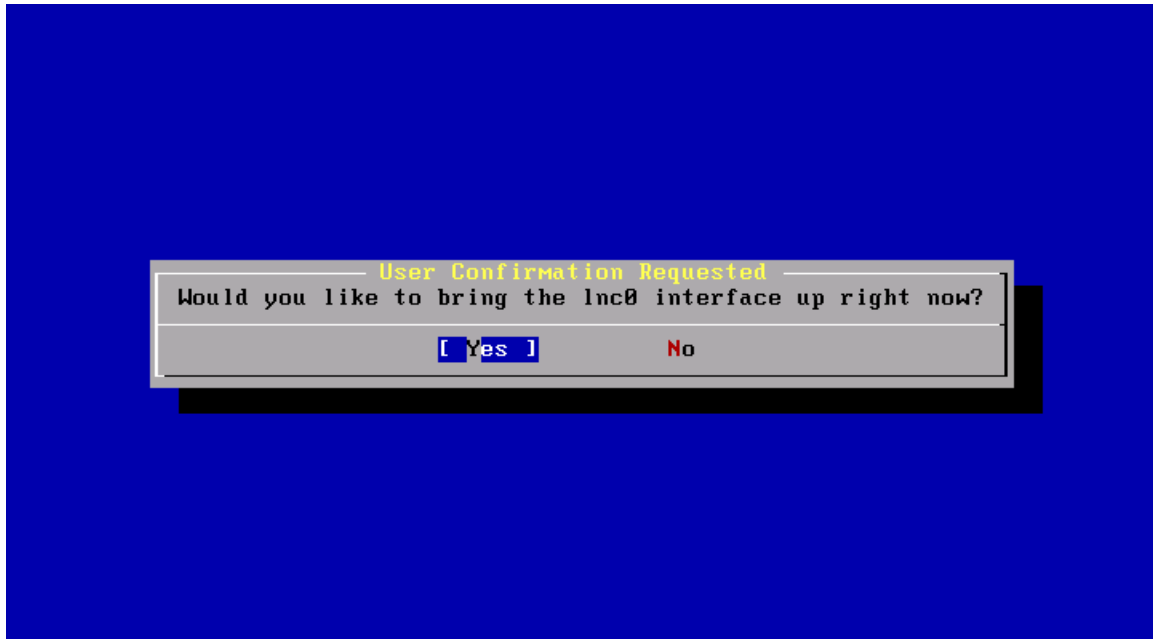
OK CANCEL

[ Your fully-qualified hostname, e.g. foo.bar.com ]

Using the TAB key to move between fields, enter the data in the table below. When you have finished entering the data, hit the OK button.

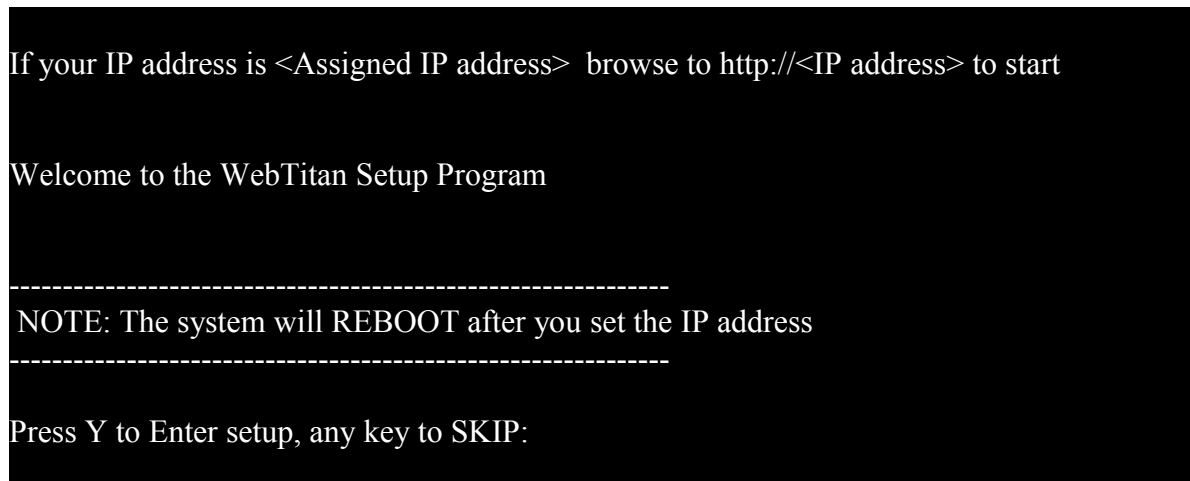
<i>Field</i>	<i>Description</i>
<i>Host</i>	FQDN (Fully qualified hostname) e.g. WebTitan.example.com
<i>IPv4 Gateway</i>	The default router for your network
<i>Name Sever</i>	The IP address of your DNS server
<i>IPv4 Address</i>	The IP address you wish to assign to the Appliance
<i>Net mask</i>	e.g. 255.255.255.0

The following screen will then appear. Select 'YES'.



You have completed assigning your IP address. The VMware machine will now reboot.

You will then see the following message.



Now you can browse to <http://<YourSpecifiedIPAddress>> to your WebTitan appliance.

Log in as follows

Administrator: admin

Password: hiadmin

Once you have logged in to WebTitan, the license must be installed. This is done on the System Setup > Licensing tab. When the license is installed, WebTitan will start to download its URL database. This will take about 30 minutes and requires access to the Internet.

The status of the database download can be checked on the 'System Overview' section of the Dashboard (The dashboard is available for selection in the top right of the UI). When completed, the version number of the database and date will appear. This is a static page, so refresh the page to check the database status. When the download is complete you can then proceed to configure your user's browsers to use WebTitan as their proxy.