



Install from CD Guide

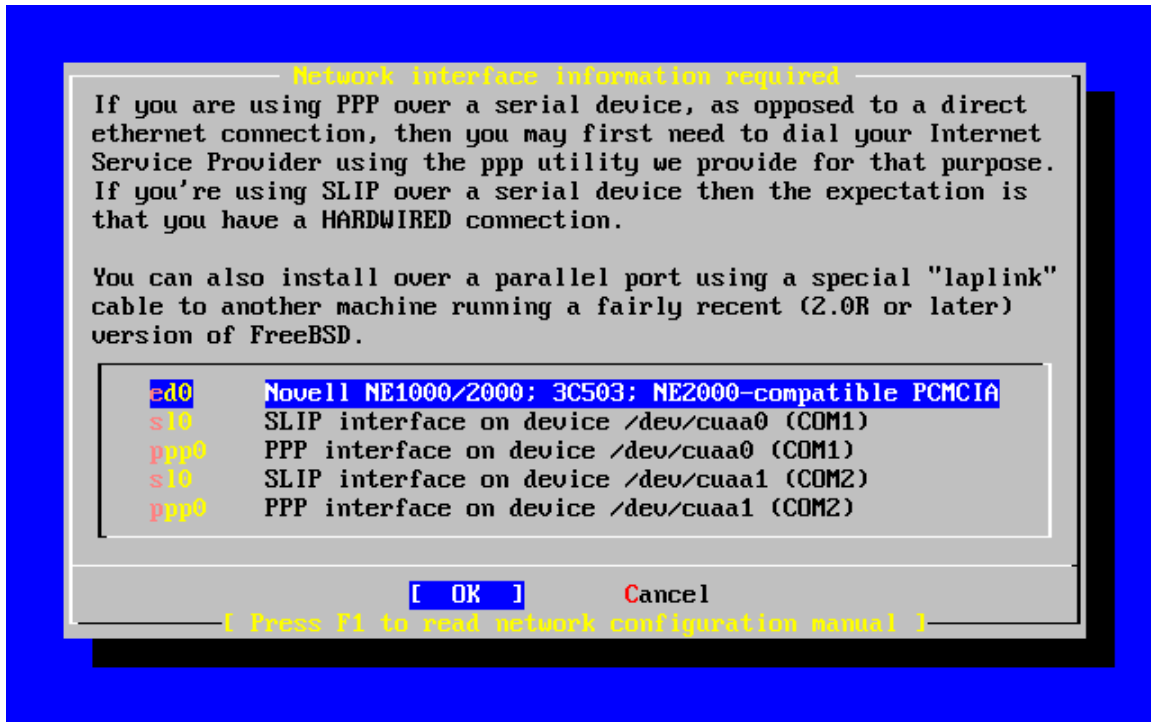
Preparation

1. Choose a suitable server that you can dedicate as a Web Filtering Gateway. Recommended specifications are:
 - CPU Dual Core
 - 1GB memory
 - 80GB disk
 - 1 Ethernet port
 - CD drive
2. Ensure that the BIOS on your server is set to Boot from the CD-ROM first followed by the primary hard drive.
3. Get a trial license from WebTitan via <http://www.WebTitan.com/downloads>

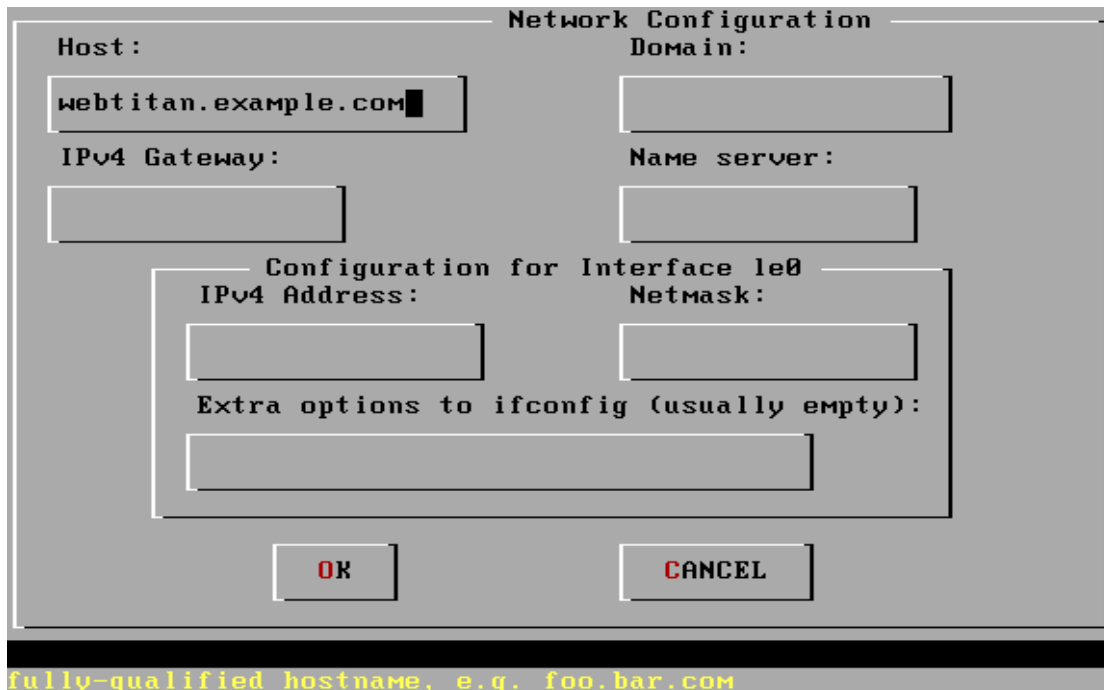
Installation:

```
***** WARNING *****  
* All data on your disk drive will be erased *  
*and replaced by the WebTitan software *  
*****
```

Place the CD supplied in the CD drive of your server and then Power On or Reboot. The following screen will appear where you will be prompted to select the Ethernet device of your server. Depending on your hardware this can be x10, ed0, fxp0, or em0. Normally you select the first item on the list below, unless you have multiple Ethernet devices. You can select a different device using the arrow keys. Hit ENTER when you have highlighted the appropriate device.



Now you will need to configure your interface.
 Select the 'NO' option for IPv6 and DHCP.
 The following screen will then appear.



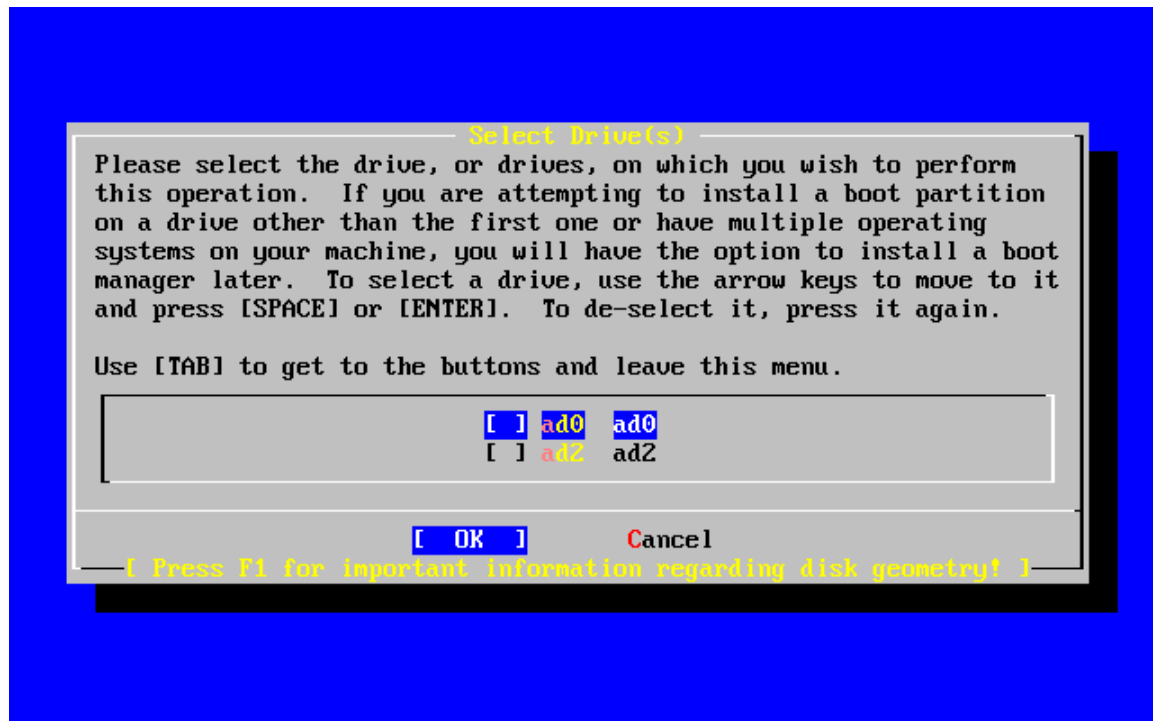
Using the TAB key to move between fields, enter the data in the table below. When you have finished entering the data, hit the OK button.

<i>Field</i>	<i>Description</i>
<i>Host</i>	FQDN (Fully qualified hostname) e.g. webtitan.example.com
<i>IPv4 Gateway</i>	The default router for your network
<i>Name Sever</i>	The IP address of your DNS server
<i>IPv4 Address</i>	The IP address you wish to assign to the Appliance
<i>Net mask</i>	e.g. 255.255.255.0

Next you will be prompted to select the disk on which to install WebTitan.

Remember, any data on this disk will be destroyed. So if you don't wish to continue hit Cancel and Exit the install.

If your server uses an IDE drive then the disks will be named ad0 for disk 1, ad1 for disk 2, etc. For SCSI systems these are named da0 etc. Normally you will install WebTitan on your primary disk ad0 for IDE. Select the disk by pressing SPACE or ENTER on the screen below.



You will now see the screen below.

Type 'a' for ALL to use all the disk and then type 'q' to finish.

```
Disk name:      ad0                                FDISK Partition Editor
DISK Geometry: 16383 cyls/16 heads/63 sectors = 16514064 sectors (8063MB)

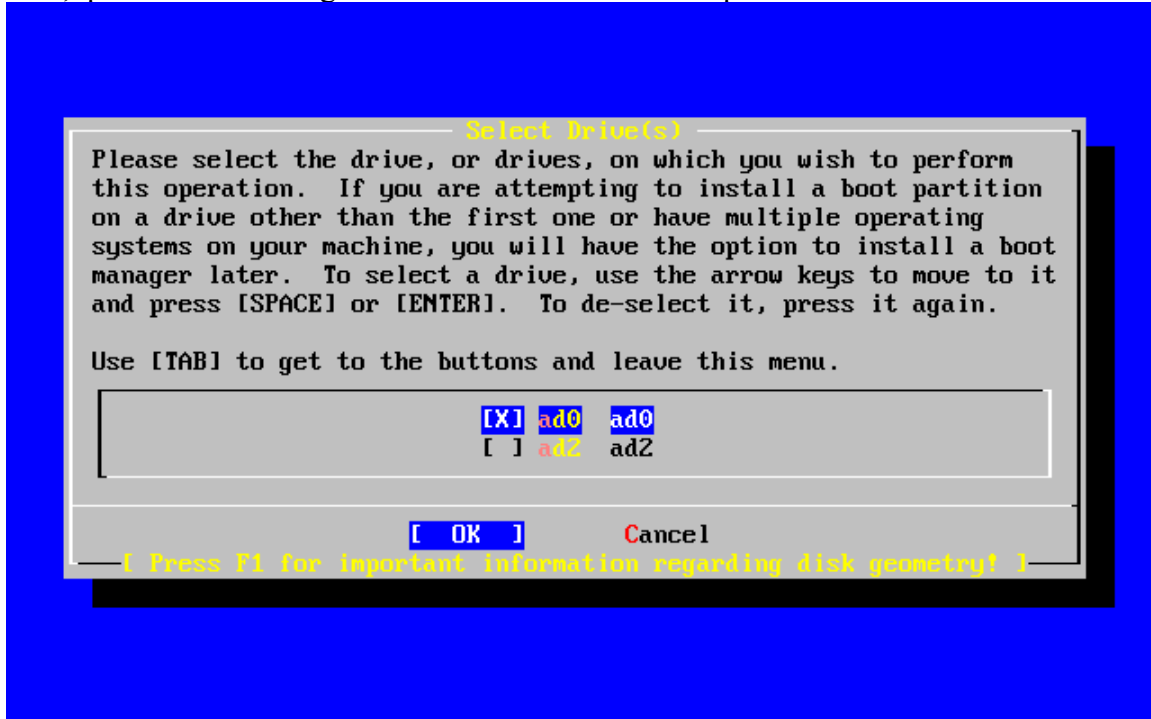
Offset          Size(ST)          End          Name PType          Desc  Subtype  Flags
-----
0              63              62          -    6      unused      0
63  16514001    16514063    ad0s1  3      freebsd     165    CA

The following commands are supported (in upper or lower case):

A = Use Entire Disk      G = set Drive Geometry  C = Create Slice
D = Delete Slice        Z = Toggle Size Units   S = Set Bootable
T = Change Type         U = Undo All Changes    Q = Quit

Use F1 or ? to get more help, arrow keys to select.
```

You will quickly see the screen below with an X against the drive you have selected. This time, press TAB to navigate to the OK button and then press ENTER to continue.



Now you need to set up the partitions on the disk you have selected. On the screen below type 'c' to Create a partition.

WARNING: DO NOT SELECT “A” for Auto Defaults.



You will see the following dialog box . Clear the dialog box using BACKSPACE. Then enter twice your physical memory. e.g. 1G for 1 Gigabyte. Then press ENTER.

```

FreeBSD Disklabel Editor
Disk: ad0 Partition name: ad0s1 Free: 16514001 blocks (8063MB)
Part Mount Size Newfs Part Mount Size Newfs
-----
Please specify the partition size in blocks or append a trailing G for
gigabytes, M for megabytes, or C for cylinders.
16514001 blocks (8063MB) are free.
16514001
[ OK ] Cancel
The following commands are valid here (upper or lower case):
C = Create D = Delete M = Mount pt.
N = Newfs Opts Q = Finish S = Toggle SoftUpdates
T = Toggle Newfs U = Undo A = Auto Defaults
Use F1 or ? to get more help, arrow keys to select.

```

You will now be prompted for the type of partition. i.e. A File System or Swap. In this case choose SWAP by using the arrow keys. The select OK. See below.

```

Disk: da0 Partition name: da0s1 Free: 16771797 blocks (8189MB)
Part Mount Size Newfs Part Mount Size Newfs
-----
Please choose a partition type
If you want to use this partition for swap space, select Swap.
If you want to put a filesystem on it, choose FS.
FS A file system
Swap A swap partition.
[ OK ] Cancel
The following commands are valid here (upper or lower case):
C = Create D = Delete M = Mount pt.
N = Newfs Opts Q = Finish S = Toggle SoftUpdates Z = Custom Newfs
T = Toggle Newfs U = Undo A = Auto Defaults R = Delete+Merge
Use F1 or ? to get more help, arrow keys to select.

```

Then press c again to create the disk partition using the remainder of disk space available.

```

FreeBSD Disklabel Editor
Disk: ad0      Partition name: ad0s1  Free: 16514001 blocks (8063MB)
Part      Mount      Size Newfs  Part      Mount      Size Newfs
-----

```

Value Required

Please specify the partition size in blocks or append a trailing G for gigabytes, M for megabytes, or C for cylinders.
16514001 blocks (8063MB) are free.

16514001

[OK] Cancel

```

The following commands are valid here (upper or lower case):
C = Create      D = Delete     M = Mount pt.
N = Newfs Opts  Q = Finish     S = Toggle SoftUpdates
T = Toggle Newfs U = Undo       A = Auto Defaults

Use F1 or ? to get more help, arrow keys to select.

```

Press ENTER to select the remaining disk space. This time, select the partition type “A file system”. Once selected, press OK and proceed. See below.

```

FreeBSD Disklabel Editor
Disk: ad0      Partition name: ad0s1  Free: 16514001 blocks (8063MB)
Part      Mount      Size Newfs  Part      Mount      Size Newfs
-----

```

Please choose a partition type

If you want to use this partition for swap space, select Swap.
If you want to put a filesystem on it, choose FS.

FS A file system
Swap A swap partition.

[OK] Cancel

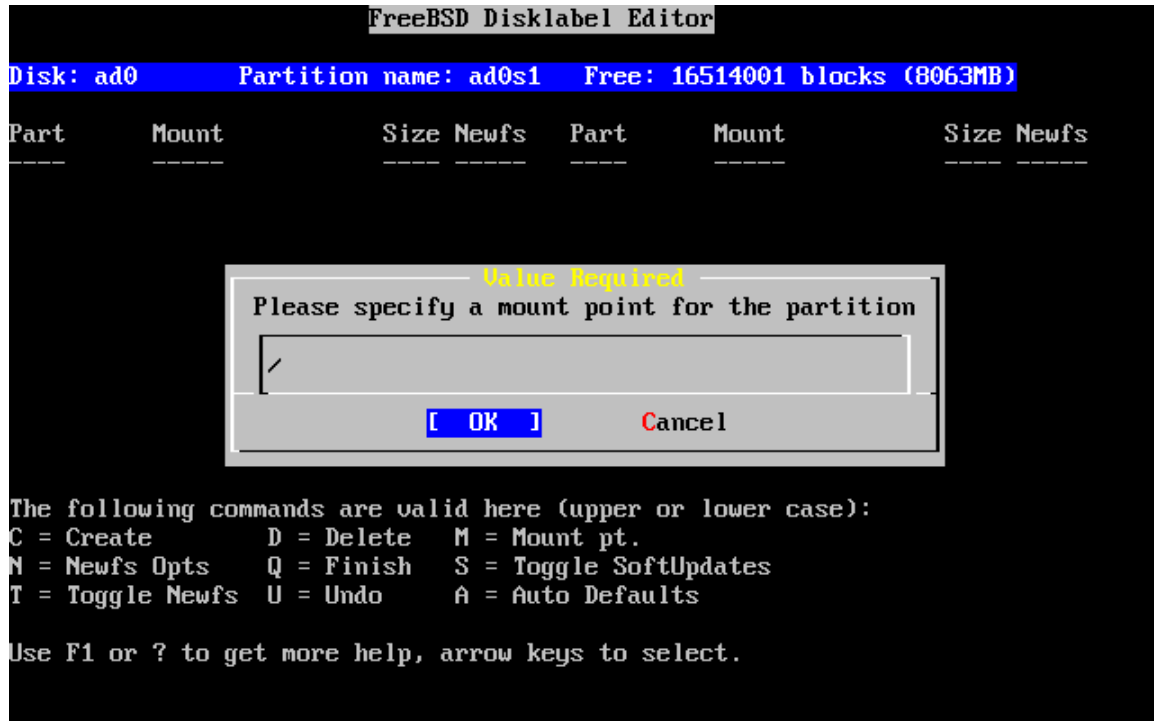
```

The following commands are valid here (upper or lower case):
C = Create      D = Delete     M = Mount pt.
N = Newfs Opts  Q = Finish     S = Toggle SoftUpdates
T = Toggle Newfs U = Undo       A = Auto Defaults

Use F1 or ? to get more help, arrow keys to select.

```

You will now be prompted for a mount point for the partition. Enter “/” for the root partition, then press OK and proceed. See below.



When completed you should see the following list of partitions. e.g.:

Part	Mount	Size
ad0s1b	swap	Twice Physical Memory
ad0s1a	/	Remainder of disk

Now press “q” for Finish.

The rest of the install is automated and will take about 20 minutes with a sequence of messages appearing on the screen.

Once complete, the server will reboot. Please ensure to remove the CD before rebooting occurs. You will then be prompted to enter a series of characters as a seed for the ssh host key.

Now you can browse to <http://<YourSpecifiedIPAddress>> to your WebTitan appliance.

Log in as follows

Administrator: admin

Password: hiadmin

Once you have logged in to WebTitan, the license must be installed. This is done on the System Setup > Licensing tab. When the license is installed, WebTitan will automatically start to download its URL database. This will take about 30 minutes and requires access to the Internet.

The status of the database download can be checked on the 'System Overview' section of the Dashboard (The dashboard is available for selection in the top right of the UI). When completed, the version number of the database and date will appear. This is a static page, so refresh the page to check the database status. When the download is complete you can then proceed to configure your user's browsers to use WebTitan as their proxy.