



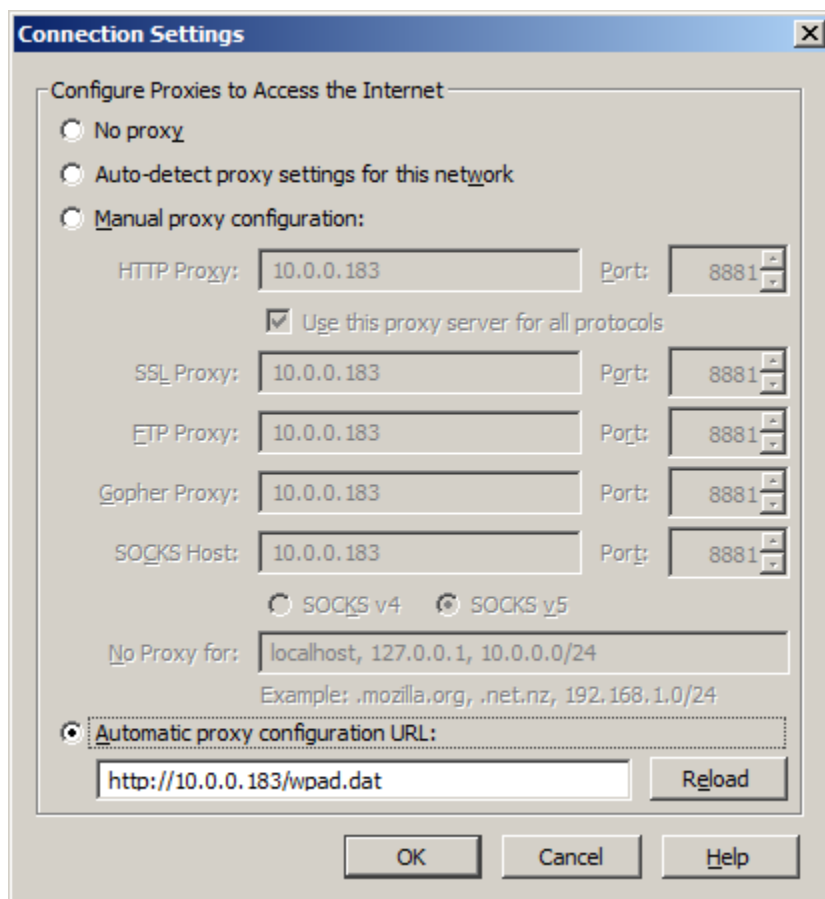
## *Quickstart guide to setting up WPAD file*

### **Introduction**

Internet browsers can be guided to use WebTitan by configuring the web browser settings. This can be done by

- Manually setting the proxy configuration
- Automatically detect the proxy settings for the network.
- Providing a URL to a wpad.dat file which contains the network proxy settings.

Below is a screen shot of potential settings for the Mozilla Firefox browser.



Automatic detection and automatic proxy configuration both require the use of a wpad.dat file.

## WPAD set up

A sample wpad.dat file is as follows:

```
----- Start -----
function FindProxyForURL(url, host){

if (
    isInNet(host, "10.0.0.0", "255.255.255.0") ||
    isPlainHostName(host) ||
    localhostOrDomainIs(host, "127.0.0.1") ||
    dnsDomainIs(host, ".company.local")
)
    return "DIRECT";

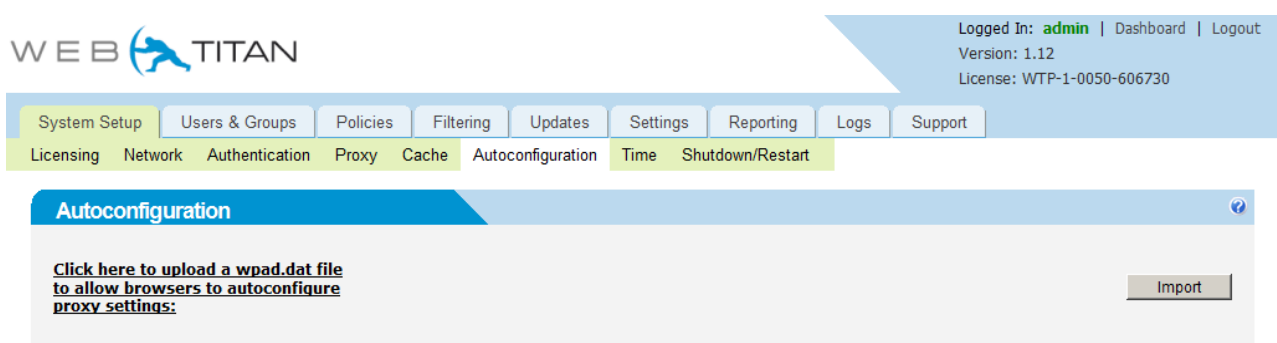
else if (isInNet(myIpAddress(), "10.0.0.0", "255.255.255.0"))

    return "PROXY <Webtitan Address>:8881";
}
----- End -----
```

This indicates that if the url request is to the internal network 10.0.0.0/24 then the WebTitan proxy is bypassed. If the url request is to any other network and comes from the internal network, then the WebTitan proxy is used.

## Loading a wpad.dat file in WebTitan

A WPAD.dat file can be loaded up by WebTitan by going to the System Setup > Autoconfiguration tab which can be seen in the screen shot below.

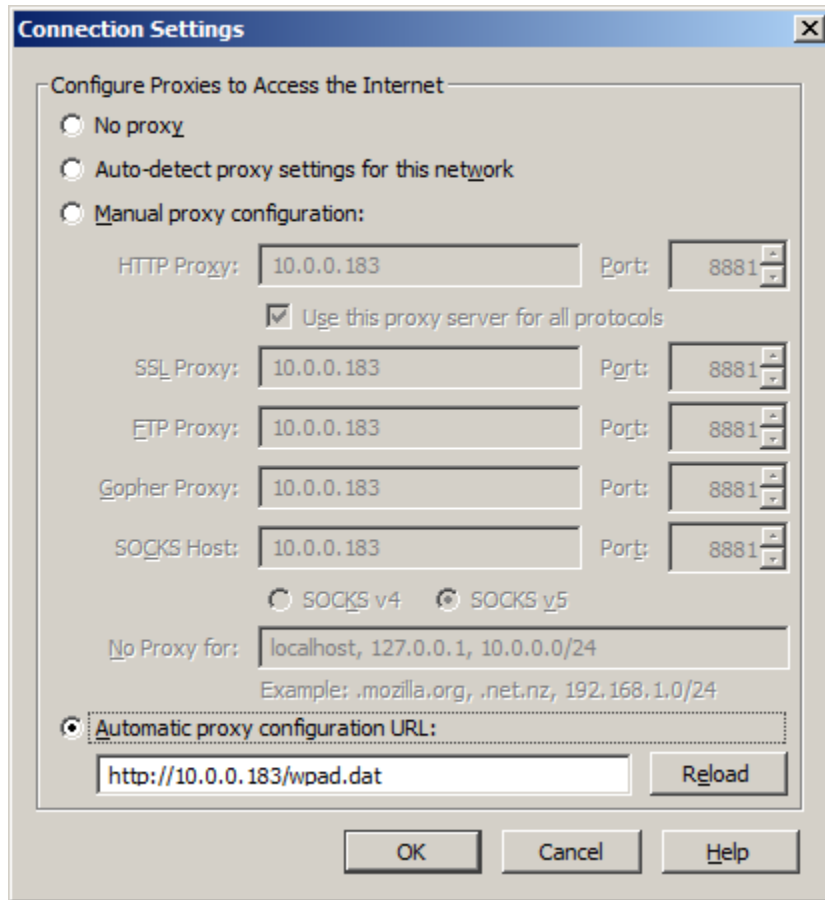


The screenshot shows the WebTitan dashboard interface. At the top left is the WebTitan logo. On the top right, it displays 'Logged In: admin | Dashboard | Logout', 'Version: 1.12', and 'License: WTP-1-0050-606730'. Below this is a navigation menu with tabs for System Setup, Users & Groups, Policies, Filtering, Updates, Settings, Reporting, Logs, and Support. Underneath, there are sub-tabs for Licensing, Network, Authentication, Proxy, Cache, Autoconfiguration, Time, and Shutdown/Restart. The 'Autoconfiguration' sub-tab is selected and highlighted in blue. The main content area of the Autoconfiguration tab contains the text: 'Click here to upload a wpad.dat file to allow browsers to autoconfigure proxy settings:' followed by an 'Import' button.

Select the 'Click here to upload...' link to browse to the location of the wpad file and then click the 'Import' button to load the file on to the WebTitan system.

## Automatic proxy configuration URL

Once you have uploaded your wpad file on to WebTitan, you can set the browser to directly pick up your proxy configuration by entering the URL for WebTitan and the path to the wpad.dat file as shown below.



## Auto-detect proxy settings

If you wish the browser to auto-detect the proxy settings, you need to amend your DNS settings and configure an alias for the WPAD entry.

e.g. You could add the following as an alias

10.0.0.131 WPAD

## Links

- Click [here](#) for how to create a WPAD entry in DNS.
- Click [here](#) for the effect that a security update has for DNS settings on Windows 2003 Server.
- Click [here](#) for further information on the Web Proxy Auto-Discovery Protocol.