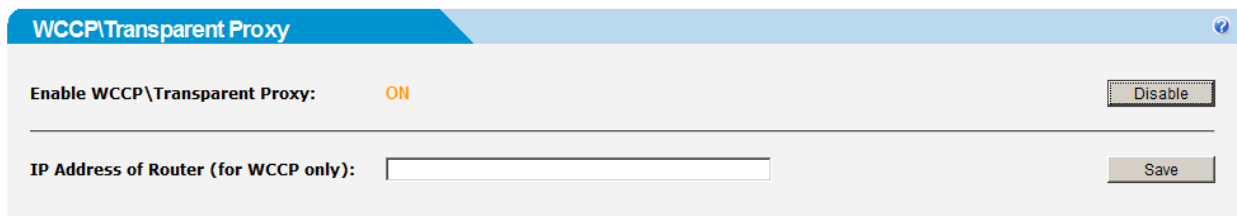




Quickstart guide to setting up Transparent Proxy and WCCP

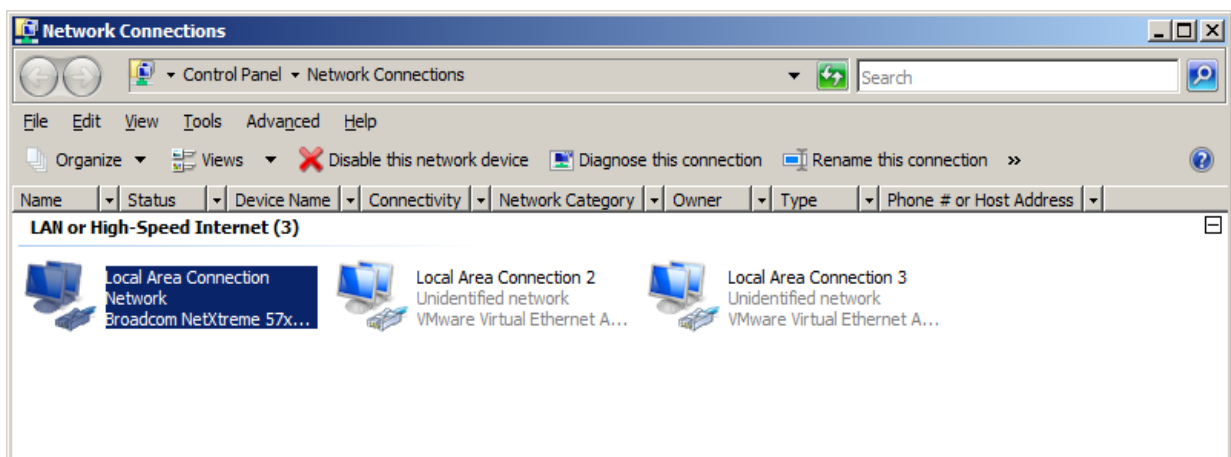
Transparent Proxy

WebTitan can be set up to operate as a transparent proxy by going to the System Setup > Proxy tab and enabling 'WCCP\Transparent Proxy' as shown below. Note that for transparent proxying, an IP address for the router is not required.

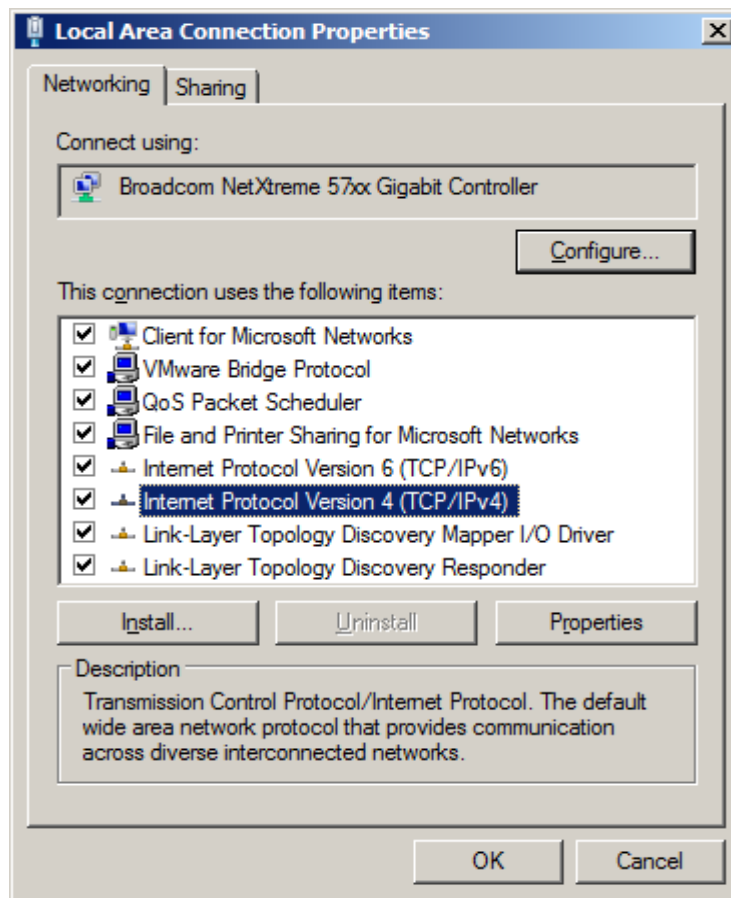


Externally to WebTitan, network traffic must be directed to the appliance by either using a network device or configuring the client browser to use WebTitan as a default gateway as follows.

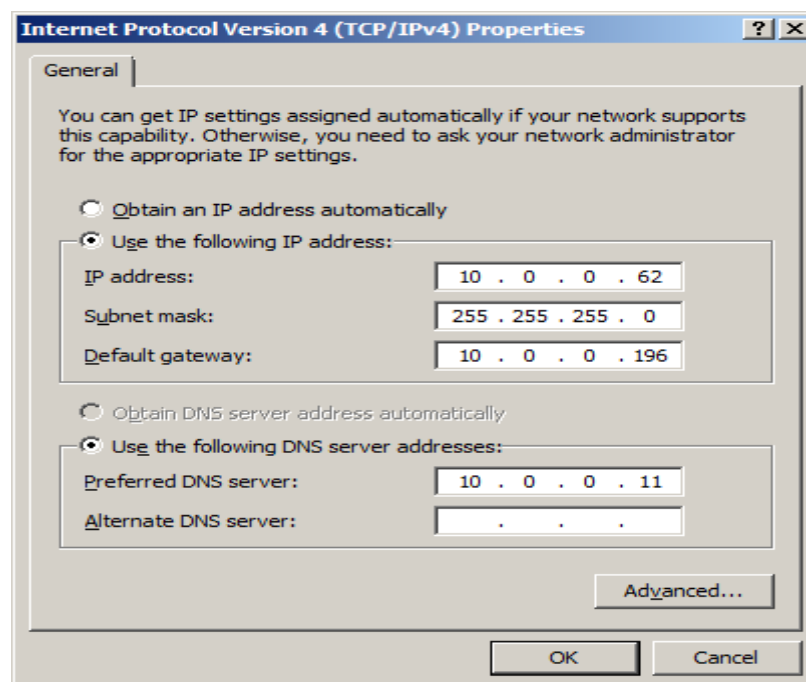
- Open up Network Connections



- Right click the Network and select properties.
- Then select the correct protocol (Internet Protocol Version 4)

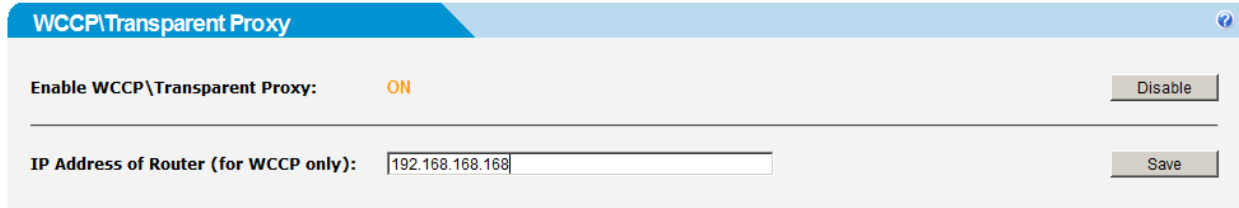


- Then click the properties button and enter in the 'Default gateway' field the IP address of the WebTitan appliance. In the example below, the default gateway has been set to 10.0.0.196.



WCCP

To configure WebTitan to act in conjunction with a Cisco router using WCCP version 2 you enable WCCP by going to the System Setup > Proxy tab and enabling 'WCCP\Transparent Proxy'. After enabling WCCP, you must enter the address of the WCCP enabled Cisco router that you want to use as shown below.



The screenshot shows a configuration window titled "WCCP\Transparent Proxy". It contains two main sections. The first section is "Enable WCCP\Transparent Proxy:" with a toggle switch set to "ON" in orange. To the right of this section is a "Disable" button. The second section is "IP Address of Router (for WCCP only):" with a text input field containing "192.168.168.168" and a "Save" button to its right.

©2006-2009 Copperfasten Technologies

You must then consult your Cisco router manual to determine how to configure it for WCCP.